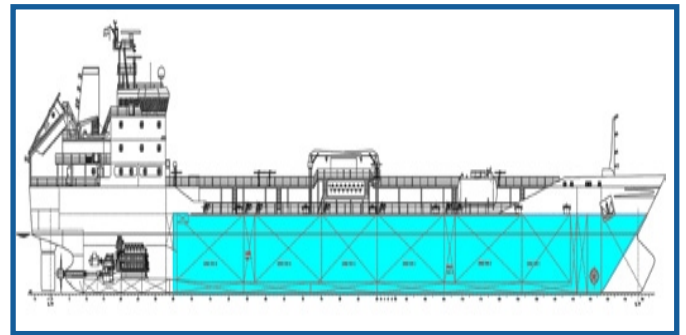


Part/Order no:	Packing
RXSOL-20-T-300-020	20 Ltr
RXSOL-20-T-300-025	25 Ltr
RXSOL-20-T-300-210	210 Ltr



## Product Description

RXSOL-20-T-300-210 is a multi - purpose heavy duty cleaing soap solution used as a common dirt remover in residential, commercial and industrial cleaning processes.

## Application


Universal cleaner for home, institutes, plant and machinery.compatible with all type of surfaces.

## Note

RXSOL-20-T-300-210 has a long non-polar hydrocarbon chain and a highly polar group at the end of the molecule thus having a cleaning power better than ordinary soap.

## Stain Removal Tips

Unknown

If a stain cannot be identified, treat with cool water first, then sponge with a good quality laundry liquid solution. Rinse well and if stain persists try equal quantities of methylated spirits (wood alcohol) and ammonia, testing first to note effect on colour and fabric. If colour is affected, omit ammonia. As a last resort, try a mild bleach, e.g. A diaper wash/sanitiser container sodium percarbonate. 

for more information :- [www.rxmarine.com](http://www.rxmarine.com)

